

Corporate Office : Surat

804, Rajhans Bonista, Behind Ram Chowk Temple, Ghod Dod Road, Surat – 395007
M : 09924733111, (O) 0261 – 2666515, 2656515
Website : www.vhptsystem.com
Email : vhptsystem@gmail.com

Branch Office :

Mumbai

Mobile : 09924733111, 07573004020,
07096000365

Vadodara

Mobile : 09924733111, 07573004020,
07096000365

Ahmedabad

Mobile : 09924733111, 07573004020,
07096000365

Pune

Mobile : 08237866946, 09924733111,
07573004020, 07096000365



VH PT SYSTEM

Post Tensioning Service Provider

East Zone Office : Patna

Lh/1, Sri Krishna Nagar, Ground Floor, HSG Colony, Patna
M : 09924733111
Website : www.vhptsystem.com
Email : vhptsystem@gmail.com

Branch Office :

Kolkata (West Bengal)

Mobile : 09924733111, 07573004020,
07096000365

Lucknow (Uttar Pradesh)

Mobile : 07573004022, 09924733111,
07573004020, 07096000365

Varanasi (Uttar Pradesh)

Mobile : 09924733111, 07573004020,
07096000365

Bhubneshwar (Odisha)

Mobile : 09924733111, 07573004020,
07096000365

South Zone Office : Bangalore

Flat No T-2, Prabhavathi Classic Apartment, No 20, 'B' Cross, Rama Temple Road, Ejipura, Po.: Viveknagar, Bangalore - 560047
M : 09952125350, 07096000837, 07573004020
Website : www.vhptsystem.com
Email : sr@vhptsystem.com

Branch Office :

Cochin (Kerala)

Mobile : 09952125350, 07096000837
09924733111, 07573004020,
07096000365

Chennai (Tamil Nadu)

Mobile : 09952125350, 07096000837
09924733111, 07573004020,
07096000365

Amravati (Andhra Pradesh)

Mobile : 09952125350, 07096000837
09924733111, 07573004020,
07096000365

Hyderabad (Telangana)

Mobile : 09952125350, 07096000837
09924733111, 07573004020,
07096000365

Gulf Countries – Dubai Office :

108, Al Khabaisi Building, Deira, Dubai, UAE
M : +971 552645857, +971 559983456, +91 99247 33111
Website : www.vhptsystem.com
Email : gulf@vhptsystem.com

Milestones of Journey

- Successfully completed 12 years in the field.
- Successfully executed around 5 crore sq ft of carpet area in PAN India
- Presently working with more than 100 Architects / Consultants across India



OUR PRESENCE



VH GROUPS :





Dr. B. NAGESHWARA RAO
Professor

STRUCTURAL ENGINEERING DIVISION
DEPARTMENT OF CIVIL ENGINEERING
INDIAN INSTITUTE OF TECHNOLOGY MADRAS
CHENNAI - 600 036 INDIA
Tel: 044-2257 4285 (O)
Fax: 044-22574252
Email: bnrao@iitm.ac.in

TO WHOMSOEVER IT MAY CONCERN

It is to certify that tendon anchorage assembly supplied by **VHPT SYSTEM**, which was tested on the specimen of **MULTI ANCHORAGE SYSTEM**, and loaded up to 95.129% of total load approximately 1223.25 KN. Hence, the assembly is **COMPLYING ACCEPTANCE STANDARDS FOR POST TENSIONING SYSTEMS**.



Assembly include Strand, Anchor Head, Anchor Cone, Duct, Wedges etc.

Description: 12.7 mm, 7 ply LRPC Strands as per IS 14268:1995

Diameter of Strand: 12.7mm
Area of Strand: 98.7mm².
Breaking Load: 183.7 KN.
Number of Strands in Tendon: Multi Strand.

Place: IIT-MADRAS

Date: 16-12-2016



Dr. B. NAGESWARA RAO
Professor
Department of Civil Engineering
Indian Institute of Technology Madras
Chennai - 600 036, India

 **MEMBER OF
POST-TENSIONING
INSTITUTE®**

The challenge of the future- Sustainable and energy efficient design:

Mastering the art of building to create a modern and timeless design requires creative ability and engineering expertise. The tradition and history of architecture shows that structures of beauty are only achieved through the combination of creative ideas and structural engineering analysis.

In the construction industry, sustainability focuses on economic and environmental aspects: the life cycle cost of structures, environmental-friendly construction materials, energy efficiency and resource consumption, as well as construction and demolition waste management. Increasing importance is also being given to the efficient, effective and responsible operation of businesses and buildings, including decommissioning and de-construction.

The construction industry therefore has to find ways of building that minimize the impacts throughout construction, the structure's life and its eventual decommissioning or replacement. Typically, this involves guaranteeing a long design life, and generally providing durability with low maintenance requirements.

Philosophies influence styles and inevitable the approach to construction systems and methods. The success of building can only be achieved if it has been built in accordance with the demands of its time. We are taking on the challenge of the future to build a more modern, more energy efficient and sustainable world where modern people can live, work and socialize.

As a lead Post Tension Consultant, we provide the total solution for your project about structure. We manage complex design, and technical logistics in a globalized environment.

The following selection of VHPT System' projects show clearly our ability to provide a level of design and workmanship services to execute the project which is of the highest level of standards.

Mr. Vijay Patel
Managing Director (Execution)

Mr. Hemal Mistry
Technical Director (Design)



VHPT SYSTEM an INDIA based company with extensive post tensioning experience, specializes in design and Installation of Post tensioning systems and related services in PAN INDIA.

We provide the following products and services:

- PT DESIGN
- BONDED PT SYSTEM
- UNBONDED PT SYSTEM
- PT INSTALLATION
- PT MATERIAL SUPPLY
- Value Engineering Services

VHPT SYSTEM typically reviews the structural design of the project with the structural engineer and determines the feasibility use of post-tensioning on the project. If post-tensioning is deemed feasible, VHPT SYSTEM submits a cost proposal to provide the reinforcing and its installation to the engineer/client, proposal defines in detail the scope of work for VHPT SYSTEM.

The quote typically includes providing the cost for post-tensioning strands, all accessories, post-tensioning System installation and it's stressing. The design of the P-T is in accordance with relevant ACI and IS codes.

Unbonded System



Our experience to date in INDIAN market has yielded some valuable information. On an average the following construction improvements were observed:

MATERIAL SAVINGS

- Thinner concrete member sizes; reduction in concrete is approximately 20%
- Rebar in floor elements is reduced by 60% to 75%
- Decreased dead load reduces rebar and concrete in columns and foundations
- Reduction in building height decreases the cost of building cladding, vertical mechanical/service elements, and rebar and concrete in shear walls

INCREASED PERFORMANCE

- Improved seismic behavior
- Reduced deflection and vibration
- Improved crack control and waterproofing properties—especially beneficial for parking garages and balconies
- Longer spans and fewer columns give greater flexibility in floor layouts in office/residential buildings and better lighting in parking garages which enhances personal safety.

REDUCED LIFETIME COSTS

- Lower overall maintenance and lifecycle costs of the structure
- Reduced building height also results in energy savings, especially for office buildings

QUICKER CONSTRUCTION

GREATER FLEXIBILITY OF DESIGN

LEAD@ POINTS FOR GREEN BUILDING INITIATIVES

Bonded System



CATEGORY

Raft & Transfer Slabs

A raft slab, also known as slab on Grade is used at the base of a structure to support the Load from above via a number of internal beams designed within the concrete floor plate. This generally used when the site's geology is unfavorate due to high water tables or unstable surrounding foundations.



The properties of a transfer slab are very similar to raft slab, the only difference being its location within the structure.

Advantages

- Reduced excavation and sub-base preparation
- Faster construction
- Less concrete is needed
- Greater savings
- Post-Tensioned slabs can carry greater loads than those that have been traditionally designed

Flat Plate Slabs

VHPT's post-tensioned system enables the most efficient continues span of concrete at minimal thickness supported only by columns capitals or beams are incorporated, allowing maximum flexibility in ceiling zones. This strong, slender and efficient structure not only provides designers and engineers with a bank canvas, but the construction delivery is also more economical that traditional reinforced concrete.



Flat Plate Slabs

- Approximately 50% reduction in handling of materials across a deck
- Up to 20% savings in concrete
- Up to 62% savings in reinforcement
- Maximum flexibility on service planning



Band Beam Slabs

This one or two suspended slab can typically span between 10 to 14 meters clear of colums. The VHPT's bonded slab system utilis 12.7mm diameter 7-wire low relaxation strands in tendons with cosist of up to five strands.

A sound band bean design can incorporate demands fro the locations and spacing of colums to core or specific services.

Tanks & Silos

In many ways, concrete is the perfect material for the construction of strange containers, being resistant to abrasion and to a wide range of chemical attack in particular, cylindrical tanks and silos maximize efficiency by offering the greatest internal volume for a given quantity of material. Such shapes are also readily post-tentioned, the wires or tendons accomodates the curvature with ease.



Multistrand



A Multistrand system uses up to 55 multiple strands (12.7 or 15.2) to form the tendon which is inserted into single circular galvanized duct. The end of the strands are placed in individual holes within the metal achor and simultaneously stressed.

This is following by pressure grouting and later testing of the stressing.

Advantages of prestressed concrete floors

- Increased Clear Span
- Thinner Slabs
- Reduced Floor Loads, Lighter Structures, Reduced Seismic Forces
- Reduced Cracking And Deflection
- Reduced Storey Height
- Rapid Construction
- Large Reduction In Conventional Reinforcement

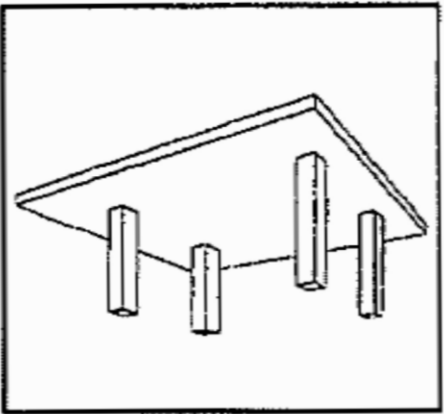
Reasons to consider p/t

- P/T slab is typically 30% thinner
- Long-term creep problems are virtually eliminated by load balancing
- Moment of inertia approaches Igross
- The slab can be stressed and the forms removed in 2-3 days
- The 21 to 28 day shoring time for rebar concrete does not apply to P/T
- Flexibility in Column Layout
- Large Cantilevers

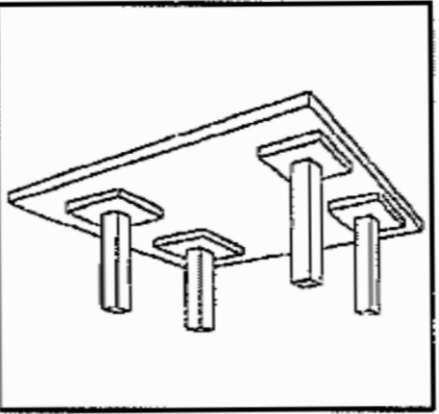
SERVICES

- BONDED PT SYSTEM
- UNBONDED PT SYSTEM
- VALUE ENGINEERING

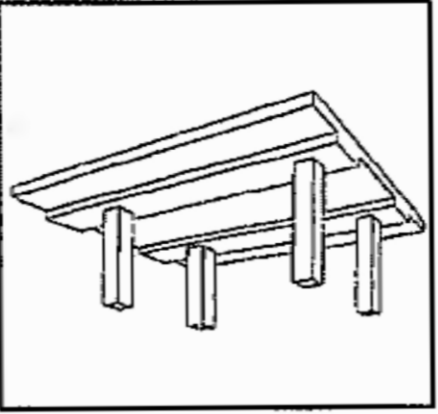
TYPICAL TWO-WAY SPANNING PT FLOORS



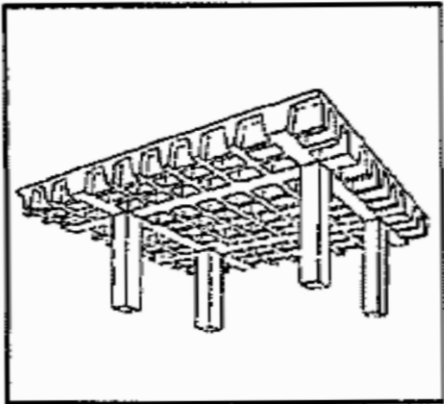
Solid flat slab



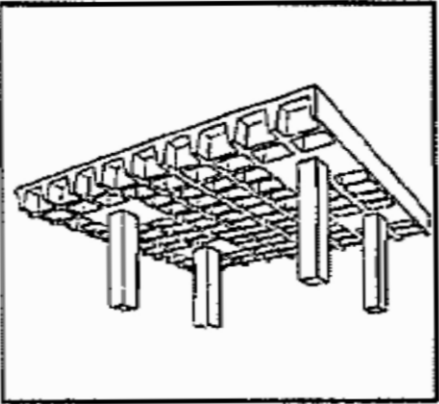
Solid flat slab with drop panel



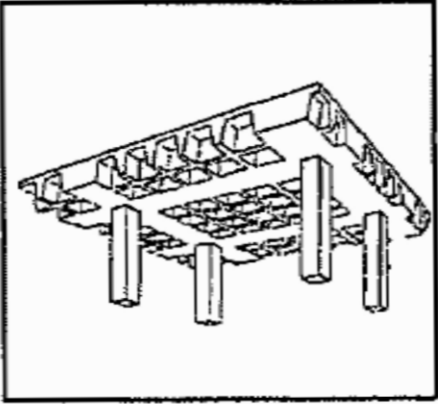
Broad beam flat slab



Coffered flat slab

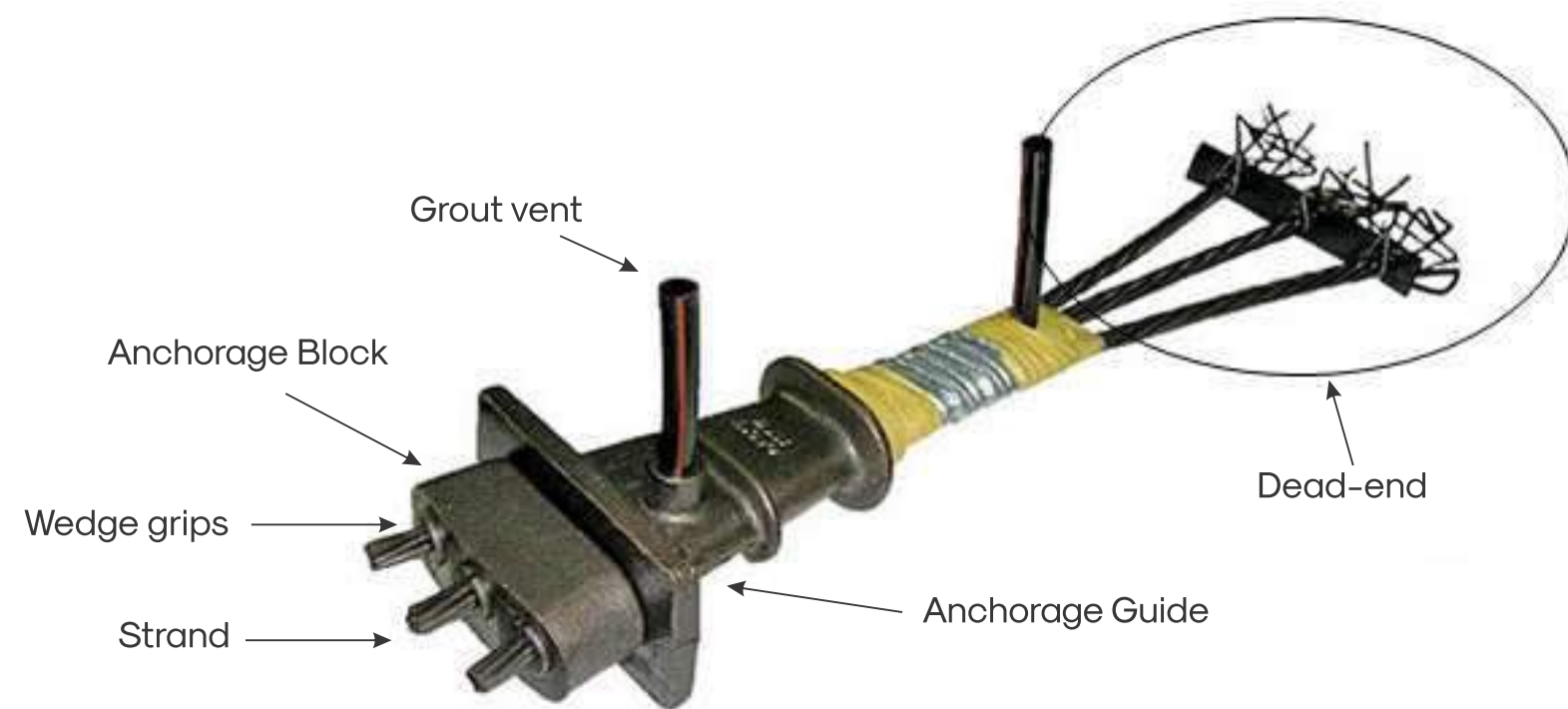


Coffered flat slab with solid panels



Banded coffered flat slab

PT COMPONENTS



Bonded Assembly

PT COMPONENTS

Bonded System



Strand



Casting



Anchor



Wedges



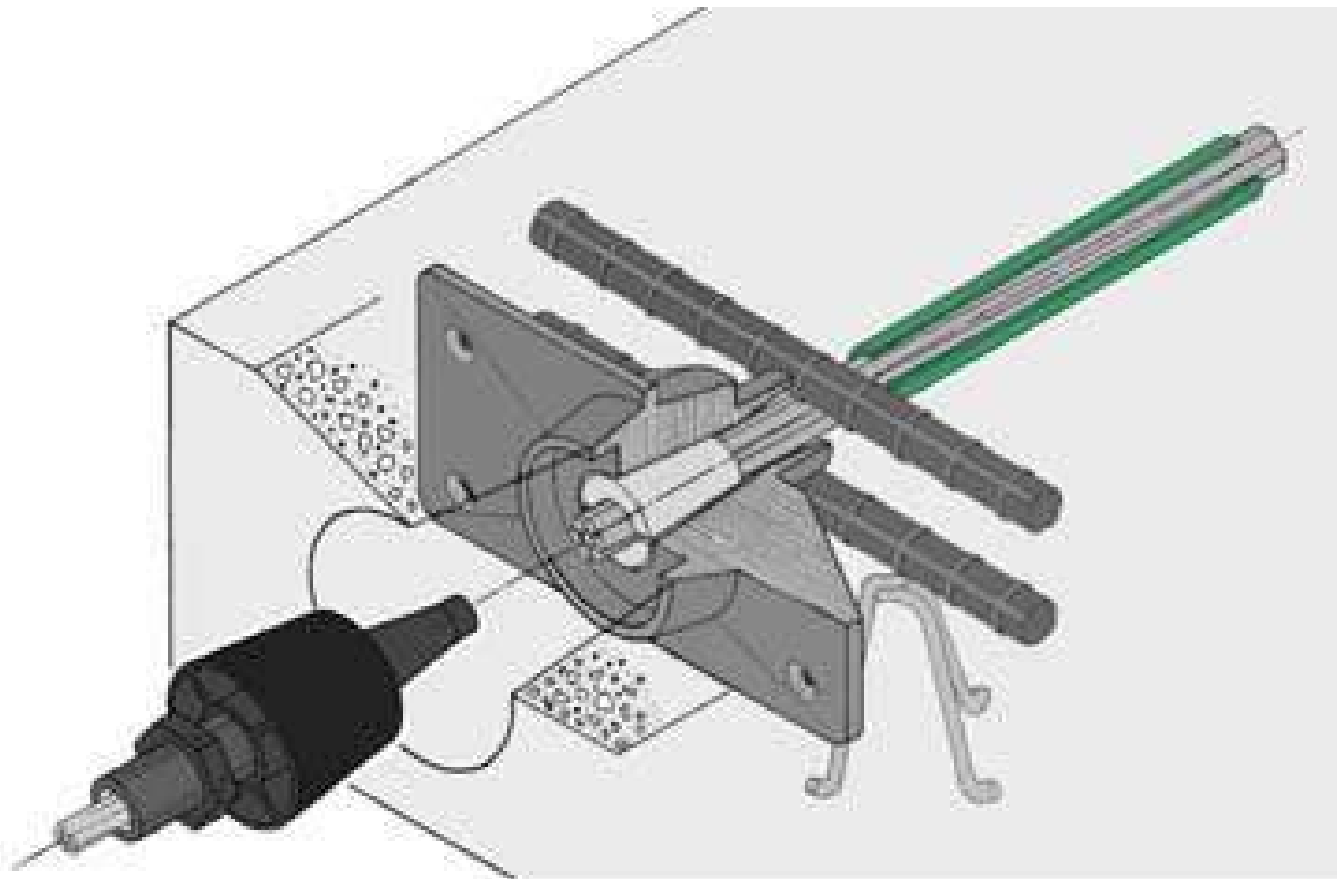
Circular Duct



Flat Duct

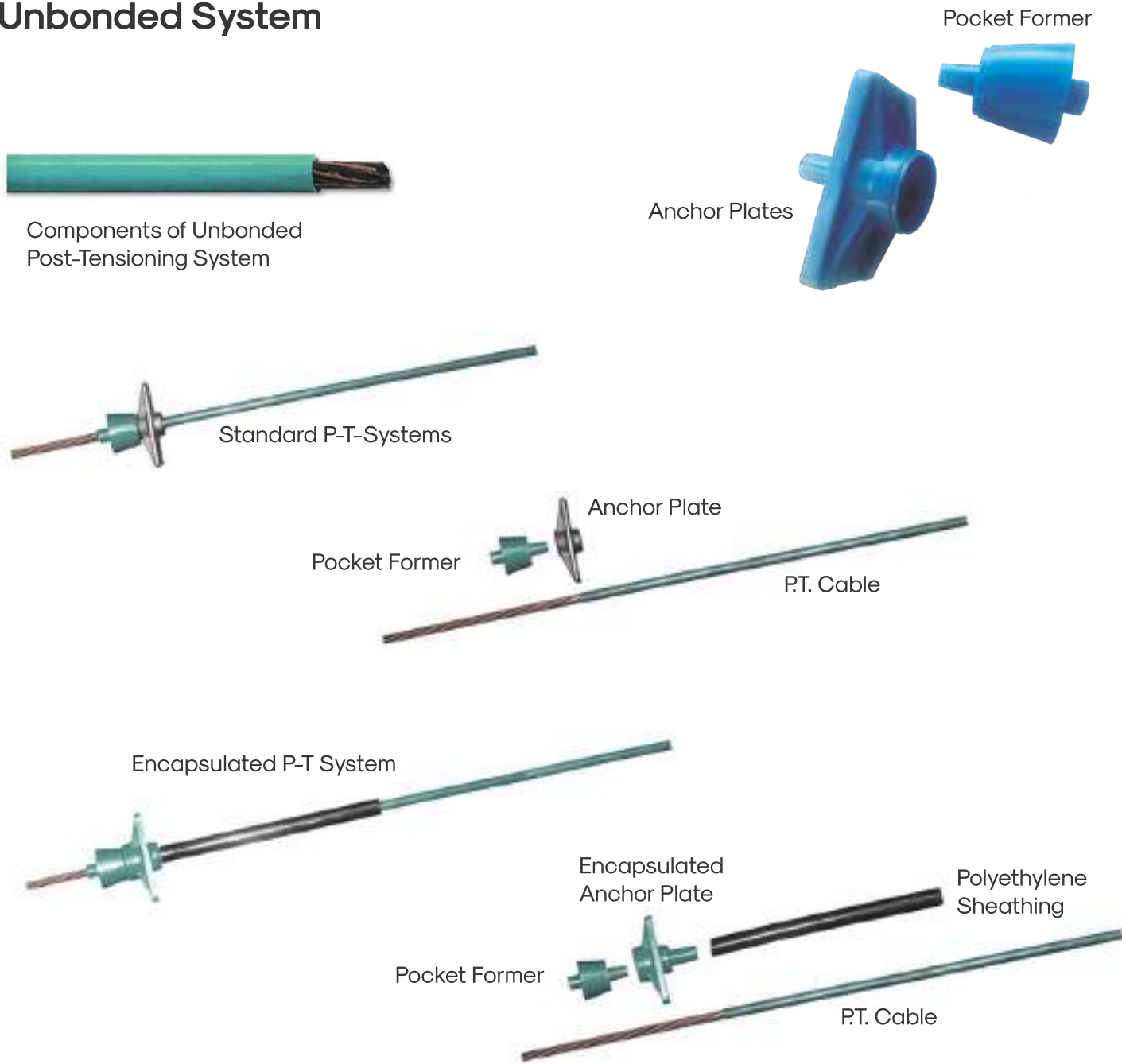
PT COMPONENTS

Unbonded Assembly



PT COMPONENTS

Unbonded System



LAYING



View of Slab Getting Ready



Completed Laying Activity



View of Laying Activity



Completed Laying Activity



View shows fix end (dead end) of strand



View shows where casting placed

STRESSING



Stressing pump with jack



Wedges with each strand



Stressing operation

GROUTING



Cleaning of duct with air compressor before grouting



Grouting process inlet of cement slurry.



Cement slurry come out through grout pipe outlet



Finished view

You are actually constructing...
what your head understood about
what your eyes saw.



PROJECTS

SURAT DIAMOND BOURSE

Client: Surat Diamond Bourse
Area: 70,00,000sqft

Projected to be one of the world's largest office buildings, Surat Diamond Bourse is an Iconic Project of 70 lakh square feet. Situated within the 2000 acre DREAM city, this this will be a high rise complex with landmark buildings that include office complexes, exhibition complexes, training schools and private as well as nationalized banks.

VHPT system as a post tension consultant provides structural solutions with 10mt. PT beam and 7 to 12mt. PT slab for whole Diamond Hub.

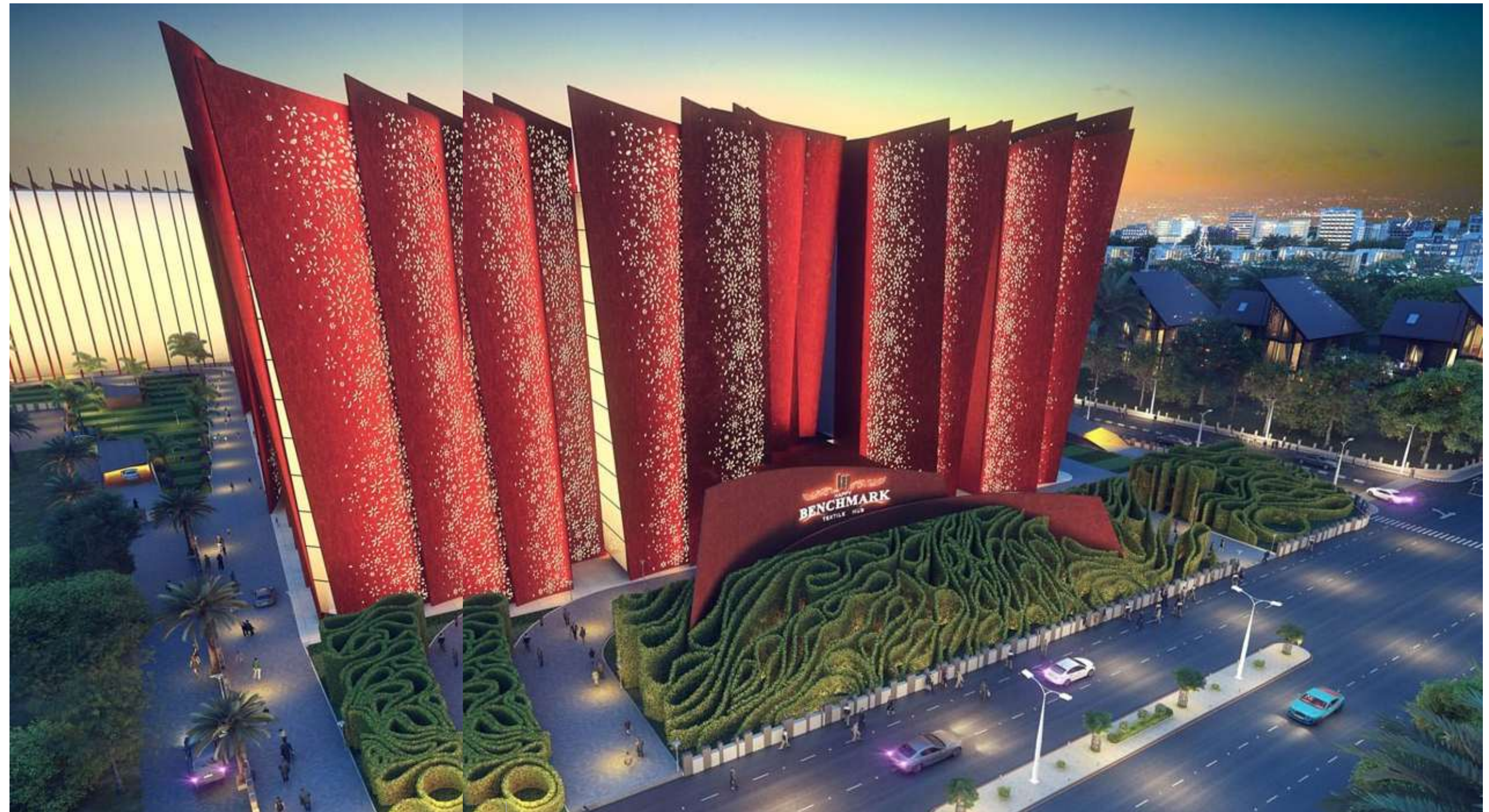


PROJECTS

BENCHMARK

Client: Happy Home Group
Area: 27,00,000sqft

It's the India's biggest textile market in commercial heart of city as well in India for cloth merchandising and selling place with vast space.
VHPT system as a post tension consultant provides structural solutions with 25mt. PT beam and 10 to 12mt. PT slab in whole textile business project.



PROJECTS

KIRAN HOSPITAL

Client: Samast Patidar Aarogya Trust
Height: 60 Mt.

Built with the motto of provide highest standards of expertise in the medical field to common man at affordable rates. This is the vision to carry value of human life and provide advance medical treatment to all sections of the society. VHPT System provides the best engineering to team to complete the project in 14 months with area more than 3,00,000 Sq. Ft. 22 Meter Spanning Transfer girder supporting floating columns of 12 Floors. Building having 14 floors with PT beams and PT slabs designed



PROJECTS

BJP Kaaryalaya

Client: Bahrtiya Janta Party

The Bharatiya Janata Party (BJP) is one of the two major political parties in India, along with the Indian National Congress. As of 2016, it is the country's largest political party in terms of representation in the national parliament and state assemblies, and it is the world's largest party in terms of primary membership.



PROJECTS

ADANI INSPIRE

Client: Adani

Adani is the one of the leading world's biggest company. In the wake of rising entrepreneurs and increasing new ventures, Adani Realty has also manoeuvred in the commercial space, renting and selling office spaces. From comfortable office spaces to opulent office suites, there is a commensurate space to define every business type.



PROJECTS

HOTEL SANKALP

Client: Sankalp Group
Height: 70 Mt.

Sankalp Restaurants are nonpareil in style and cuisine. Authentic style culinary preparations, the ethnic table layout and the excellent service add to the USP of this Restaurant Chain. For them one of the biggest high rise hotel project.



PROJECTS

PROXIMA

Client: Dudhwala Developers

The Group has over the years acquired several parcels of land in strategic locations across the entire city and its outskirts. With over 3 million square feet of development in pipeline, the group is committed to create landmark developments across the city.



PROJECTS

SKYDECK SELECT

Client: Saanvi Group

The geometric facade design of the apartment building ensemble heads in a whole new direction. The horizontal structure of the 13-floor twinned towers incorporates an arrangement of split-level apartments, with the room spaces expanding upwards and downwards alternately.



PROJECTS

INFINITY TOWER

Client: Nishal Group
Height: 55 Mt.

Located in the central part of city, that offers closeness, connectivity and convenience. Centrally located, intelligently designed, world-class in aesthetics and amenities and with flexible spacious office layouts, Infinity Tower offers you an unmatched opportunity to transform your business into successful empire.



PROJECTS

AMAAZIA

Client: Rajgreen Developer

India's first integrated indoor Amusement park at Surat- AMAAZIA BY RAJGREEN, which includes Water Park, Bird Park, Snow Park, 7D Theatre, 3 Screen Multiplex, 5 star hotel, Retail Mall. Rides will be imported from Italy, Germany and Swiss. Park area around 16 acres. VHPT as a PT consultant has done the job in different parts of Park, like in hotel, Water Park, Multiplex building etc.

LCL Building with a span of almost 30 MT PT Beam and various rides supported by PT structures. Bridge part is with 20 mt. span with cantilever projection.



PROJECTS

RAJHANS BUSINESS HUB

Client: Rajhans Group
Height: 70 Mt.

Surat's very first skyscraper–Rjahans Business Hub. A new official address for those who see sky as their limit. Every window will show the majestic Tapi river.
Complete flat plate structure using Post tension structure upto 22 Floors.



PROJECTS

VANILLA SKY

Client: Rajgreen Developer
Height: 65 Mt.

Residential spaces are designed in such a way that makes room for the artist in you and respect the entrepreneur. skyscraper of its kind residential Project nested in the heart of the city.



PROJECTS

IFM

Client: Green Group

It is the textile shopping market with shops and showroom in the commercial heart of city.



PROJECTS

SANGINI ARISE

Client: Sangini Group

Residential spaces are designed in such a way that makes room for the artist in you and respect the entrepreneur. First iconic and one of its kind residential Project nested in the heart of the city.



PROJECTS

SHYAM SANGINI TEXTILE MARKET B1

Client: Sangini Group

It's the one of the biggest textile market in commercial heart of city as well in India for cloth merchandising shop with vast space.



SHYAM SANGINI TEXTILE MARKET B2

Client: Sangini Group

It's the one of the biggest textile market in commercial heart of city as well in India for cloth merchandising shop with vast space.



PROJECTS

SANGINI OFFICE

Client: Sangini Group

This project is with Basement + Ground + 7th Floors Corporate office Building.
The Bonded PT slab at every floor is 300 mm thick with cantilever 9m at different floor.



SANGINI MAGNUS

Client: Sangini Group

It is the one of the big commercial project with whole project flat slab with longer span.



PROJECTS

AYODHYA TEXTILE MARKET

Client: Seven Star Group

It's the one of the biggest textile market in surat as well in india for cloth merchandising and selling place with vast space.



PROJECTS

CELLESTIAL DREAMS

Client: D R B Ravani Developers
Height: 65 Mt.

Experience the supremely GOOD, a harmonious space with tranquility and grace, an address that satisfies all your needs is “CELLESTIAL DREAMS “. A project of almost 14, 00,000sq.ft area distributed in 8 towers. VHPT System as a Post tension consultant provides structural solutions with sustainable technical design with almost 80% project with PT slab and PT area including Podium.



PROJECTS

ANTALIA DREAMS

Client: D R B Ravani Developers

An address beyond destination. A lifestyle beyond luxury And a home beyond dreams. Presenting ANTALIA DREAMS, a spectacle words can't describe. Nestled in the heart of Surat, it is a modern marvel of contemporary design and civil engineering.

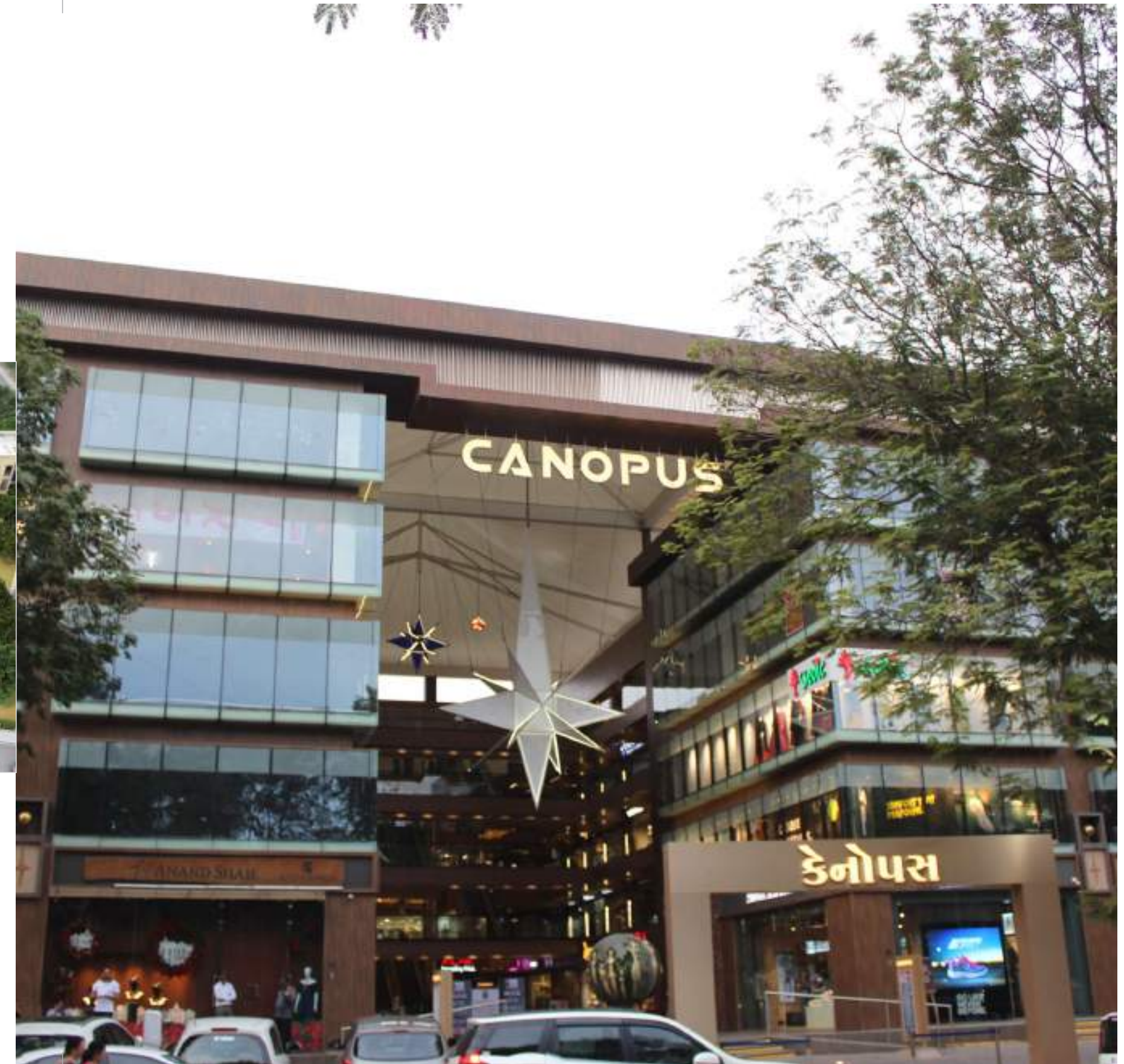


PROJECTS

CANOPUS

Client: D R B Ravani Developers

Site located in the heart of city, with all commercial shops designed to maximum frontage along the road and opening to grand atrium in the center. Grand entrance lobby with excellent lounge followed with glorious atrium. Designed according to latest international codes and with maximum utilization of natural light to enlighten the internal spaces. All major beams are posttensioned with maximum span of 73'.



PROJECTS

DREAM HERITAGE

Client: D R B Ravani Developers

Located at one of the prime location for higher business growth. All floors constructed with PT beam with maximum span length of approx. 13 Mt. As height is restricted by authority. VHPT has provided suitability to have fully utilisation of height in given restriction.



KANHA CAPITAL

Client: Kanha Group

Kanha Capital is premier lifestyle mall that defines the taste of elite. Blessed with modern amenities and spectacular architecture, Walk Way is bound to be a journey of success for all entrepreneurs involved.



PROJECTS

RAJHANS MONTESSA

Client: Rajhans Group

Commercial spaces are situated at the near airport of city. Very iconic and one of its kind commercial Project nested in the heart of the city.



PROJECTS

RAJHANS HELIX

Client: Rajhans Group

Commercial spaces are situated at the prime location of city. Very iconic and one of its kind commercial Project nested in the heart of the city.



BANSAL MALL

Bansal Mall is Wooden Chair, Wooden Table, Ladies Cotton Suits, Ladies Sports Shoes and Wooden Sofa, Wardrobes, Furniture shops and Multiplex theatre with PT flat Slab.



PROJECTS

VENEZIANO

Client: Sargam Developer

Roman Architecturally Designed Elevations and Interiors. Full Street Frontage for Maximum Exposure and Huge Footfalls. Long Water Canal with Floating Venice Gondolas.



PROJECTS

VIKAS LOGISTIC

It's the one of the biggest textile market in commercial heart of city as well in India for cloth merchandising and selling place with vast space.



PROJECTS

GOKULDHAM

Client: Mr. Narehshbhai Dobariya

One of the milestone club house in Surat, having PT beam of Span 20 MT at basement top level which support cross angled column



PROJECTS

ANKIT GEMS

Client: Ankit Gems Pvt Ltd.

One of the fastest growing Diamond factory established new factory for their business expansion which is located at Gujarat Hira Bourse, Ichchapore . PT beam and PT slab structure with maximum span of 23.5 MT PT beam along with Exposed slab with PT beam.



PROJECTS

BUNGALOW FOR MR. DAMODAR

The bonded PT slab is 18m X 20m voided slab. Soil filling load on slab is 11 KN/m² & live load is 4 KN/m². The slab thickness is 600mm with thermocol as void former.



PROJECTS

BLOSSOM

Client: Imperial Developers
Height: 50 Mt.

The valley of gardens “BLOSSOM” where life becomes blissful and heavenly. 3,4 and 5 BHK Ultra Lavish apartments to suite need for luxurious yet leisure lifestyle for the residents. Area of project around 12,00,000Sq.ft with master class design.VHPT System with its qualified team of PT work execution has done the tremendous job by satisfying client's needs.



PROJECTS

BELLISSIMO HUB

Bellissimo Hub Is Situated At A Prime Location of city. It Is Beautifully Crafted Architectural Building. Combination Of Rich Materials Like Exterior A.C.P Sheet & Glass With Good Amenities Makes It's Elevation Elegant. This Ground + Five Storey Building Has Covered 56,500 Sq.Ft. Land Area. It Has All Size Of Shops And Office Space From Small To Large In Its Planning.



PROJECTS

WALKWAY – THE MALL

Client: Bhakti Group

Walk Way is premier lifestyle mall that defines the taste of elite. Blessed with modern amenities and spectacular architecture, Walk Way is bound to b a journey of success for all entrepreneurs involved.



PROJECTS

FIONAA

Client: Soham Developers
Height: 55 Mt.

One of the milestone residential project in Vesu area of Surat with a total built up area approx. 4, 00,000 Sq. ft. The shape of the tower resembles the form of this precious stone and building has become well known through the enigmatic design and highly reflective external envelope.



PROJECTS

UNIVERSAL BUSINESS CENTER

Centrally located, intelligently planned and world-class in aesthetics and amenities. Large corporate office, spacious showroom or cozy retail shop, whatever may be the size of your business, here is the perfect commercial space for you.



SHAVION

Located at one of the prime location for higher business growth. All floors constructed with PT beam with maximum span length of approx. 16 Mt. As heigh is restricted by authority. VHPT has provided suitability to have fully utilisation of height in given restriction.



PROJECTS

SAKET TEXTILE MARKET

It's the one of the biggest textile market in commercial heart of city as well in India for cloth merchandising and selling place with vast space.



OFIRA BUSINESS HUB

Client: Avantis Group

Grand entrance lobby with excellent lounge followed with glorious atrium. Designed according to latest international codes and with maximum utilization of natural light to enlighten the internal spaces. All major beams are post tensioned with maximum span of 20-22 mt.



PROJECTS

NAZAR BAUG

Nazar Baug is premier lifestyle mall that defines the taste of elite. Blessed with modern amenities and spectacular architecture, Walk Way is bound to be a journey of success for all entrepreneurs involved.



|



KIRAN GEMS

Client: Kiran Gems-Sports Club

One of the prestigious diamond company having their own club house constructed with drop PT Slab having span of about 14 mt.



PROJECTS

PATIDAR SAMAJ WADI

Client: Patidar Samaj Wadi

Social function community hall having beam grid of 29X28 mt. with all the beam constructed through PT design.



SHLLOK TRITON

Client: Shllok Triton

Located at one of the prime location for higher business growth. All floors constructed with PT beam with maximum span length of approx. 13 Mt. As heigh is restricted by authority. VHPT has provided suitability to have fully utilisation of height in given restriction.



PROJECTS

TWIN TOWER

Client: Surana Group

Located at center of the city for maximum utilization of Textile business.



UMIYA TEMPLE COMMUNITY HALL

Client: Umiya Temple Community Hall

Community hall for Social function for one of the famous Umiya Dham Temple. PT beam span of almost 20 Mt. with total of four no of slabs with floor height approx. 4 Mt.



PROJECTS

METRO MALL

METRO Cash & Carry is India's leading business-to-business wholesaler, serving the needs of traders, hotels, restaurants, caterers, offices and institutions. VHPT system as a post tension consultant provides structural solutions with 11mt. PT beam for whole Shopping Mall.



GRAND PLAZA

It is the one of the big commercial project with whole project flat slab with longer span. It is situated at a very prime location and heart of the Surat city.



PROJECTS

BROADWAY SCHOOL

The concept of grouping student together in centralized location for learning has existed since classical antiquity. Formal schools have existed at least since ancient Greece, ancient Rome, ancient India, and ancient China but now in current scenario the modern school are there, where student is taught with new tools that technology has offered. The concept of grouping student together in centralized location for learning has existed since classical antiquity. Formal schools have existed at least since ancient Greece, ancient Rome, ancient India, and ancient China but now in current scenario the modern school are there, where student is taught with new tools that technology has offered.



BRAHMA SKY UZURI

Client: Brahma Reality

Commercial spaces are designed in such a way that makes room for the artist in you and respect the entrepreneur. First iconic and one of its kind Commercial Project nested in the heart of the city.



PROJECTS

DCC

Client: Arcon Builders

One of the prestigious commercial mall project in Muzaffarpur build with PT Beam and PT slab having Flat slab structure. Mall having facility of multiplex, Auditorium, Commercial shops.



KAILASH PURI

Client: Mr. Navin Singhi

Prestigious commercial project in Pink city “Jaipur” build with PT Beam having beam span of 22.0 MT.

|



LALA LAJPATRAI MEMORIAL HALL

Client: Punjab Bradri

Community hall project at Patna, Bihar for Punjabi Samaj built with Flat slab structure

RHRL HOTEL

Client: Ramanandi Hotel & Resorts Ltd

Five star hotels with built up area of approx. 2,00,000sq.ft having swimming pool, auditorium built with PT beams.



|

SOSHIT SEWA KENDRA SCHOOL

Client: Soshit Sewa Sangh

School project by one of prestigious social trust named Soshit Sewa Sangh having PT beam structure.



Milestone Atlantis



Vidyamandir College of Architecture for Women



Diamond Elements



Corona Heights



Capital Life



Rajhans Cosmic



La Classico

Anjani Icon



Maruti Impex



Kalyan Jewellers



Ripple Mall



Gokul Solitaire



Sarthana Community Hall





Bionics
International
Academy



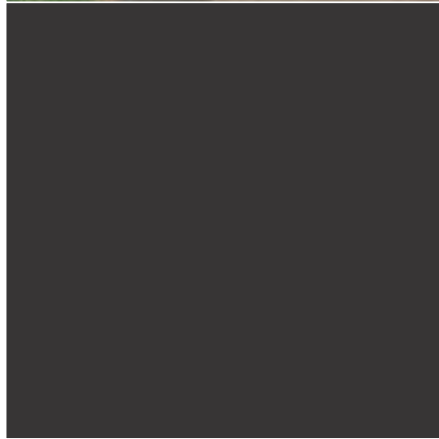
Kataria Arcade



Star Galaxy Club House



Unity Corner



Helios



La Casa Lucido

Fortune



D. Navinchandra & Co.



Milestone Eternis
Milestone Group



Milestone Elements
Milestone Group



Ornate Elegance



MCA College



Maple 9



ADMG



LIST OF PROJECTS

KIRAN HOSPITAL
AMAAZIA THEME PARK
AMAAZIA AMUSMENT PARK
PROXIMA
BRAHMA SKY UZURI
BANSAL MALL
SAGAR COMPLEX
SKYDECK SELECT
RAJHANS HELIX
NAZAR BAUG PALACE
FACTORY BUILDING FOR VRAJ PACKAGING
SHARNAM - 4
SSK SCHOOL
ARORA STUDIO BUILDING
CLUB HOUSE
CITY CENTRE
RAMDIN HOTEL
SARTHANA COMMUNITY HALL
KANHA CAPITAL
RAJHANS BUSINESS HUB
AYODHYA TEXTILE MARKET
GHOGHARI SAMAJ HALL
KATARIA BARDOLI
DWARKA CITY CENTRE
CELLESTIAL DREAMS
ANTALIA DREAMS
GRASIM INDUSTRIES
MEDICAP FACTORY
COMMERCIAL BUILDING
HILLCOCK BANQUET
NAVRACHNA INTERNASTIONAL SCHOOL
TEMPLE AT BHUJ
NANAVATI CAR SHOWROOM
INTERNATIONAL FASHION MARKET
BJP KARYALAY

THE GRAND PLAZA
AURUM (COMMERCIAL COMPLEX)
ROSHAN CINEMA
BALAJI GEMS
RAJHANS COSMIC
FACTORY BUILDING FOR MARUTI IMPEX
ICAI BUILDING
GOKUL SOLITAIR
MONET RESIDENTIAL
CANDLEWOOD
RADHY SQUARE
VIDHI PLAZA
MAHESH SONANI FACTORY
L.P. SAVANI SCHOOL
PRITI GEMS
HELIOS
ROYAL PARADISE
MANGONESE VILLA CLUB HOUSE
LA GRANDE RESIDENCY
BLOSSOM RESIDENCY
MAGNET
BUNGLOW FOR VISHAL KOKRA
ANKIT GEMS
CHIRAG SHAH
AKSHAR GEMS
VAIBHAV GEMS
SHRIYUKT
SPORTS COMPLEX
HARISHBHAI BUNGLOW
COCONUT RESIDENCY
CANOPUS MALL
DHIMANTBHAI SAKAR
SHAVION PARADISE
HAPPY EXCELLENCIA
HARISHBHAI (K.K)

AMIT GAJJAR
VISHAL KOKRA
KANUBHAI BUNGLOW
MANISH SHAH
MULTILEVEL PARKING
VASTUSHILP GATE
MASSIMO TERRACE
AAKAR SPORTS CENTER
UPASHRAY
PIYUSHBHAI FACTORY
AJAY BANSAL
HARESHBHAI BUNGLOW
NITINBHAI
KAMRUNAGAR HALL
CELEBRETY GREEN
STAR HOME
CORONA HEIGHTS
MUKESHBHAI BUNGLOW
SILVER STONE VILLA
DHARMARAJ EXPORT
METRO HOTEL
STAR GALAXY
DHIMANTBHAI BUNGLOW
STAR MANORATH
SAYAJI HOTEL
HANSRAJ BHAI
ASHOK MOWALIA
HIMANSHU FUDNAWALA
SAMAJ WADI
DHAVALBHAI BUNGLOW
FORTUNE MALL
MASMA COMMUNITY HALL
CHIRAG SETH
DIPAKBHAI
JILESHBHAI BUNGLOW

UNITY CORNER
VAISHNAVI AQUATECH
VIKESH KANGRI WALA
FASHION HOUSE
RASIKBHAI BUNGLOW
ANJANI ICON
COMMUNITY HALL_UMIYAMATA TEMPLE
MAHESHBHAI BUNGLOW
MEENA BAZAR
ATLANTIS MILESTONE
ELITA SQUARE
MANOJBHAI BUNGLOW
MADHAV PLATINA
VRUNDAVAN HEIGHT MALL
POONYABHUMI
COMMERCIAL BUILDING
JAGDISHBHAI PATEL
DHIREN DOLTANI
SANGINI MARKET-2
JAGDISHBHAI BUNGLOW
SANGINI MAGNUS
R.H. ZION PARTY HALL
ST. XEVIERS SCHOOL
BHAVIN JOSHI
UMIYA TEMPLE
SANSKRITI TEXTILE
RITESH PATEL
INFINITY TOWER
GOVERDHAN HAVELI
LUKHI HOSPITAL
MEDICAL COLLEGE
SPANDAN BUNGLOW
ANAND LAL
MEDITATION CENTRE
JAINAM HOUSE

EYE HOSPITAL
SAKET TEXTILE MARKET
NAGOD WADI
THAKORBHAI BUNGLOW
TAPI ARCADE
VIGNESHWAR ARCADE
KATARGAM POLICE STATION
HISTORICAL FORT
SANGINI OFFICE
ANIS HAFIZJI
BELLISIMO HUB
R N DOBARIYA BUNGLOW
JAYANTIBHAI BUNGLOW
SHIVANTA PALACE
KARUNA SAGAR HALL
MUSKAN HOUSE
ABRAMA SCHOOL
UNIVERSAL BUSINESS CENTRE
SHARDA SCHOOL
VENEZIANO
INSTITUTE OF NUROSCIENCE
SIGNET MALL
PRAYOSHA
SCHOOL PROJECT
ANKURBHAI BUNGLOW
DARJI SAMAJ SANGH
DR.KHUSHROO BUNGLOW
OFIRA BUSINESS HUB
UMIYA RESIDENCY
BENQUIT HALL
SHALIGRAM SIGNATURE
VEMALI HALL
MANISH CHOKSI
HONEYBHAI BUNGLOW
SUNIL JARIWALA

DR. DIXIT BUNGLOW
RITESH BHAI BUNGLOW
VISTAR TRUST
COMMERCIAL BUILDING
CANDLE WOOD
JITENDRA THAKKAR
PRASHANTBHAI SCHOOL
VINODBHAI BUNGLOW
ICON HEIGHTS
NARANBHAI BUNGLOW
EMERALD COMMERCIAL
NSC
MAHERBHAI BUNGLOW
HOSPITAL BUILDING LALDARWAJA
PRAVINBHAI BUNGLOW
MR. OZA SIR
VIDHI SQUARE
JITENDRA KAPADIYA
ASHESHBHAI FARMHOUSE
MILESTONE ELEMENTS
KANHA EMPIRE
MANISH SOMANI
STAR PALACE
LA VICTORIA
PRIMARY SCHOOL
BHARATBHAI BUNGLOW
DR.VINOD SHAH
SANTVAN EXCELLA
JAY NAIK
RAJSHREE SHOPPERS
MR.SUBHJI MALOO
HOTEL D'GLANCE
GANDHI SCHOOL
PRAMUKH SHOPPERS
ALKAPURI COMPLEX

NARESHBHAI BUNGLOW
ZIRCON PLUS
SANGINI EVOKE
AURA LIFE CARE
DINESH MANIYA
DAMODARBHAI BUNGLOW
TUSHAR PANDYA
NIRVANA SHOPPERS
MILESTONE ETERNIS
SHIVEN SHOPPERS
MUKESH AWASTHI
ORIEN IMPERIA
SHYAM SANGINI B2
JUNEJA FARM HOUSE
TIME SQUARE
PIYUSHBHAI BUNGLOW
ROONGTA HOUSE
THE GALLERIA
SAHEBJI SHOPPERS
JAY LAKHANIYA
PANCHAM ICON
DEVASHAY ONYX
CITY COMMAND CONTROL CENTRE
SANGINI ARISE
WALKWAY-THE MALL
TAM HOUSE
BIONICS INTERNATIONAL SCHOOL
RAJ SIDHDHI COMPLEX
COMMERCIAL COMPLEX FOR KATARIA
LASCO LIFE STYLE BUILDING
FACTORY BUILDING FOR FLORENCE EXPORT AT SURSEZ
A COMMERCIAL COMPLEX AT SARTHANA
STAR SHELL RESIDENTIAL HIGHRISE
FACTORY BUILDING FOR SUDESH SYENTHICS
NAVRACHANA INTERNATIONAL SCHOOL -1

HOSPITAL BUILDING FOR DIAMOND ASSOCIATION
PARKING BAY & GYM HALL DREAM HERITAGE BUILDING
ORNATE ELEGANCE
PARKING BAY FOR DREAM PALACE BUILDING
MISSION HEIGHTS
4D SQUARE AVADH (MALL WITH MULTIPLEX)
TRIPUR (COMMERCIAL COMPLEX)
DREAM BUSINESS HOUSE
BUILDING FOR BLOOD BANK
SHREE YUKT HYPER BARODA
LASKANA SCHOOL FOR DIAMOND ASSOCIATION
VASTU LAXURIA CLUB HOUSE
CAPITAL GREEN CLUB HOUSE
JEWLSTAR DIAMOND FACTORY
HI TECH TEXTILE MARKET
BHIMJIBHAI DIAMOND FACTORY
FINANCIAL SUPER MARKET FOR GSV MKT
NAVRACHANA INTERNATIONAL SCHOOL -2
GREEN ELINA
GOKULDHAM CLUB HOUSE
KSTAR DIAMOND FACTORY
K.K.COMMERCIAL
ANAND INTERNATIONAL SCHOOL
KIRAN EXPORT
C.D. SQUARE
FACTORY BUILDING FOR DHARMAJ EXPORTS AT SURSEZ
KATARGAM HALL
LADVI SCHOOL
MANIAR
MARVELLA
METRO MALL
NARESHBHAI BUNGLOW
NAVRACHANA UNIVERSITY
RONVEL CLUB HOUSE
ROSHANBHAI BUNGLOW

SHAILESHBHAI
MAPPLE 9
SCHOOL AT MOTA VARACHHA
SIDDHARTH SCALEUP
SHIVALIK
SURESHBHAI BUNGLOW
TANTEWADA
TEMPLE PROJECT
TRITON
UNIVESAL TEXTILE MARKET
UPASHRAYA
SANJIVNI HEIGHTS GATE
INTERNATIONAL TEXTILE MARKET
VINOD JAIN SCHOOL
OPERA BUSINESS HUB
POLYMECH PLASTIC
ADANI INSPIRE
THE EVOQ
TIMES SHOPPERS
THE THEME WALL
AAGAM SQUARE
VIBRANT MALL
DR. RAM MUNDE
THE ATMOSPHERE
AAGAM VIVIAANA
BLUE BELL
SURAT DIAMOND BOURSE
CLUB GRANDEZA
RAJHANS MONTESSA
VIKAS LOGISTIC
HOTEL SANKALP
MR.DILIPBHAI
RAJHANS FELIX
LA HALIOS
HAREKRISHNA SCHOOL

HOTEL SANKALP
BUNGLOW FOR MR. PATHIK SHAH
UMARGAON TEMPLE
DR.SURYAVANSHI
RAJUBHAI BUNGALOW
COMMERCIAL PROJECT FOR MR. V.D.KHENI
VIKAS DHARA
SHIVAM DIAMOND
BUNGALOW FOR MR. JIGNESH
BENCHMARK TEXTILE HUB
BUNGALOW FOR ANAND BUNG
RAGHUVVEER SCARLETT
KISHANBHAI FACTORY
HOUSE FOR MR. BHUPAT BHAI
BUNGLOW FOR MR. MANUBHAI
JAIN RESIDENCY
HOSPITAL BUILDING FOR DR.HANUMANT
RIGA STREET
RESIDENCE FOR MR.SANJAY BHAI
HOSPITAL BUILDING FOR DR.HEMANT
FACTORY PROJECT AT DABHASA
COMMERCIAL PROJECT FOR MR.CHAND PATEL
TWIN TOWER
BUNGLOW PROJECT FOR MR.HITESH
HOSTEL BUILDING FOR MR.MOTEGAONKAR
AAYOJAN HOUSE
ROLYCAB INDUSTRIES
DALIA SCHOOL
GREEN PARADISE
TIMES HAUS
JAIN UPASHRAY
SANKALP SHIVANTA